

NEWMAN QUARRYING PTY.LTD

ACN 067 605 323

PO BOX 22, WOODBURN 2472

PH (02) 66822667 FAX (02) 66822433

Sly's Quarry
Pollution Incident Response Management Plan

Jackybulbin Road, Tabbimobile Site

CONTENTS

1. Introduction.....	3
1.1 Background and scope.....	3
1.2 Regulatory Requirements.....	3
2. Premise Details.....	6
2.1 Site Details.....	6
2.2 Major Hazards.....	6
2.3 Chemicals and Potential Pollutants.....	6
3. Management and Responsibilities.....	7
3.1 Legal Duty to Notify.....	7
3.2 PIRMP Management.....	7
4. Incident Management.....	8
5. Notification Procedures.....	10
5.1 Determination of Material Harm.....	10
5.2 Internal and External Notification.....	10
5.3 Notification to Local Landholders and Community.....	11
6. Training, Testing and Communication.....	11
6.1 Training.....	11
6.2 Testing, Review and Maintenance.....	11
6.3 Availability of the PIRMP.....	12
7. Review Register.....	12
8. Appendices.....	13
8.1 Appendix 1 – Topographical map showing creeks	13
Map of quarry showing pollutant locations.....	14
9. Control and Revision History.....	15
9.1 Document Information.....	15
9.2 Revisions.....	15

1. Introduction

1.1 Background and Scope

The *Protection of the Environment Legislation Amendment Act 2011 (PELA)* received assent on 16 November 2011 resulting in changes to the *Protection of the Environment Operations Act 1997 (POEO Act)*. The intent of the PELA is to improve the way pollution incidents are reported and managed. Provisions include a requirement for holders of Environmental Protection Licences (EPL'S) to prepare, keep, test and implement a Pollution Incident Response Management Plan (PIRMP). The specific requirements for PIRMP's are set out in Part 5.7A of the POEO Act and the *Protection of the Environment Operations (General) Regulations 2009 (POEO(G) Regulation)*. In summary, this legislation requires the following:

- Holders of EPLs must prepare a pollution incident response management plan (section 153A, POEO Act);
- The plan must include the information detailed in the POEO Act (section 153C) and the POEO(G) Regulation (clause 98C) and be in the form required by the POEO(G) Regulation (clause 98B);
- Licensees must keep the plan at the premises to which the EPL relates (section 153D, POEO Act);
- Licensees must test the plan at least every 12 months and after a pollution incident in accordance with the POEO(G) Regulation (clause 98E); and
- If a pollution incident occurs in the course of an activity so that material harm to the environment is caused or threatened within the meaning of Part 5.7 of the POEO Act, licensees must immediately implement the plan (section 153F, POEO Act).

As the holder of EPL 11649, Newman Quarrying Pty Ltd Slys Quarry is required to comply with the POEO Act; as such, this document has been developed to satisfy the PIRMP requirements documented here.

This document also details the procedures for notification of pollution incidents resulting in or having the potential to cause material harm to the environment. The notification of environmental incidents under this PIRMP is only required for those incidents causing or threatening to result in material environmental harm (a material harm incident) as defined in the POEO Act (see **section 5.1**).

1.2 Regulatory Requirements

Specific detail is required for inclusion in the PIRMP. **Table 1.1** lists information mandated under Section 153C of the POEO Act and clause 98C of the POEO(G) Regulation and details where this information is located in this document.

Table 1.1 Document Directory

Section 153C	Detail required	Location in document
(a)	<p>The procedures to be followed by the holder of the relevant EPL in notifying a pollution incident to:</p> <ul style="list-style-type: none"> • The owners or occupiers of premises in the vicinity of the premises to which the EPL relates, and • The local authority for the area in which the premises to which the EPL relates are located and any area affected, or potentially affected, by the pollution, and • Any persons or authorities required to be notified by Part 5.7 (of the POEO Act) 	<p>Section 5.3</p> <p>Section 5.2</p> <p>Section 5.2</p>
(b)	A detailed description of the action to be taken, immediately after a pollution incident, by the holder of the relevant EPL to reduce or control any pollution,	Section 4.0
(c)	The procedures to be followed for co-ordinating, with the authorities or persons that have been notified, any action taken in combating the pollution caused by the incident and, in particular, the persons through whom all communication are to be made.	Section 5.2
(d)	<p>Any other matter required by the POEO(general) Regulation 2009 (as set out below):</p> <p>98C(1)(a) A description of the hazards to human health or the environment associated with the activity to which the licence relates (the “relevant activity”).</p>	Section 2.2
	98C(1)(b) The likelihood of any such hazards occurring, including details of any conditions or events that could, or would, increase that likelihood.	Section 2.2
	98C(1)(c) Details of the pre-emptive action to be taken to minimise or prevent any risk of harm to human health or the environment arising out of the relevant activity.	Section 2.2
	98C(1)(d) An inventory of potential pollutants on the premises or used in carrying out the relevant activity.	Section 2.2
	98C(1)(e) The maximum quantity of any pollutant that is likely to be stored or held at particular locations (including underground tanks) at or on the premises to which the licence relates.	Section 2.2
	98C(1)(f) A description of the safety equipment or other devices that are used to minimise the risks to human health or environmental and to contain or control a pollution incident.	Section 4.0

Table 1.1 Document Directory (continued)

Section 153C	Detail required	Location in document
	98C(1)(g) The names, positions and 24hr contact details of those key individuals who: <ul style="list-style-type: none"> (i) Are responsible for activating the plan, and (ii) Are authorised to notify relevant authorities under section 148 of the POEO Act, and (iii) Are responsible for managing the response to a pollution incident. (iv) 	Section 3.2 Section 5.2
	98C(1)(h) The contact details of each relevant authority referred to in section 148 of the POEO Act.	Section 5.2
	98C(1)(i) Details of the mechanisms for providing early warnings and regular updates to the owners and occupiers of premises in the vicinity of the premises to which the licence relates or where the scheduled activity is carried on.	Section 5.2.1
	98C(1)(j) The arrangements for minimising the risk to harm to any persons who are on the premises or who are present where the scheduled activity is being carried on.	Section 4.0
	98C(1)(k) A detailed map (or set of maps) showing the location of the premises to which the licence relates, the surrounding area that is likely to be affected by a pollution incident, the location of potential pollutants on the premises and the location of any stormwater drains on the premises.	Section 2.1 Section 2.2 Appendix 1
	98C(1)(l) A detailed description of how any identified risk of harm to human health will be reduced, including (as a minimum) by means of early warnings, updates and the action to be taken during or immediately after a pollution incident to reduce the risk.	Section 4.0
	98C(1)(m) The nature and objectives of any staff training program in relation to this plan.	Section 6.1
	98C(1)(n) The dates on which the plan has been tested and the name of the person who carried out the test.	Section 6.2
	98C(1)(o) The dates on which the plan is updated.	Section 6.2
	98C(1)(p) The manner in which the plan is to be tested and maintained.	Section 6.2

2. PREMISE DETAILS

5.1 Site Details

Sly's Quarry is an open cut hard sandstone rock quarry located approximately 20km north of Maclean in the Clarence Valley Council local government area (LGA), New South Wales. The quarry has been operating since the 1960's and has been owned and managed by Newman Quarrying Pty Ltd since about 1995. Mining activities are managed by Newman Quarrying Pty Ltd who is the nominated operator of the mine. The mine is to continue to be operated in its current form as per its plan of management.

The surrounding areas which may potentially be impacted by a pollution incident occurring at Sly's quarry, in addition to the premise itself, may include the following:

- Landholders adjacent to the mine (refer to **Appendix 1**) and,
- Un-named watercourses that flow from the property and ultimately end up in the Clarence river.

2.2 Major Hazards

The potential major environmental hazards which have been identified for Sly's quarry include:

- Spills – resulting in land contamination
- Spills – resulting in water contamination
- Major unlicensed water discharge (from dam failure); and
- Fire (e.g. bushfire)

The likelihood of environmental hazards occurring at Sly's Quarry has been captured through the risk analysis process undertaken as part of Slys Quarry mine safety management plan as required by mines department legislation. The systematic identification, assessment and management of foreseeable hazards is undertaken using risk management process. The process includes:

- Identifying foreseeable hazards associated with operations at Slys quarry;
- Assessing health, safety, environment and community risks using recognised analysis and evaluation methodologies; and
- Implementing controls necessary to eliminate or reduce identified risks in accordance with the established hierarchy of controls for environmental management.

2.3 Potential Pollutants

At Slys quarry only limited amounts of chemicals are stored on site, such as minor amounts of roundup to kill weeds on stockpiles or pressure pack of mortein to kill flies. All chemicals are accompanied by the relevant Material Safety Data Sheets as required by work health and safety regulations.

Slys Quarry does store bulk diesel and a large quantity of oils on site. This is used in the running of the quarry plant and equipment. The facilities that store the diesel and oils have been designed and maintained with regard to Australian Standards and are designed to incorporate:

- Impervious walls and floors;
- Sufficient capacity to maintain at least 110% of the volume of the tank;
- Walls not less than 250mm high; and
- Floors graded to a collective sump for pump out.

The *OHS Amendment (Dangerous Goods) Act 2003* requires that workcover be notified if dangerous goods held on site are above prescribed thresholds. Slys quarry does not store dangerous goods above the threshold and therefore does not have a dangerous goods licence and are not required to submit an annual Dangerous Goods Notification to Workcover.

Potential pollutants created as part of operations, and thus excluded from registers, include:

- Sediment laden surface water runoff from disturbed areas; and
- Effluent waste

These materials are in a constant state of flux as a result of operational requirements. Risks associated with these potential pollutants are incorporated into the risk register discussed above. **Appendix 1** displays the location of potential pollutants including oil and chemical storage locations and sewerage treatment facilities.

3. MANAGEMENT AND RESPONSIBILITIES

5.1 Legal Duty to Notify

All Newman Quarrying Pty Ltd employees and contractors are responsible for alerting management personnel to all environmental incidents, or hazards which may result in an environmental incident, regardless of the nature or scale.

Notification responsibilities are detailed in the POEO Act (section 148), which encompasses all site personnel, including contractors and sub-contractors. These can be categorised broadly as:

- The duty of an employee or any person undertaking an activity:
Any person engaged as an employee or undertaking an activity (at Slys quarry) must, immediately after becoming aware of any potential incident, notify their relevant manager of the incident and all relevant information about it. This is to be undertaken as per **section 5.2**; and
- The duty of an employer or occupier of the premises to notify:
An employer or occupier of the premises on which the incident occurs, who is notified (or otherwise becomes aware of) a potential pollution incident, must undertake notification to the appropriate regulatory authority of any **“material harm incident”**, including relevant information. Notification shall be undertaken by the Environmental and Community Manager or Quarry Production Manager as per **Section 5.2**.

3.2 PIRMP Management

The specific responsibilities associated with the management and implementation of the PIRMP is outlined in **Table 3.1** below.

Table 3.1 PIRMP Management Responsibilities

Name	Contact details	Position	Responsibility
Mark Newman	(w) 02 66451150 (mob) 0427822667	Company Director	Responsible for authorising the PIRMP and all subsequent updates. Responsible for ensuring adequate resourcing for implementation of the PIRMP. Responsible for undertaking notification as defined in this PIRMP. Authorised to liase with relevant authority. Responsible for coordinating the response to a pollution incident.

4. INCIDENT MANAGEMENT

A pollution incident is defined in the POEO Act as an incident or set of circumstances during or as a consequence of which there is or is likely to be a leak, spill or other escape or deposit of a substance, as a result of which pollution has occurred, is occurring or is likely to occur. It includes an incident or set of circumstances in which a substance has been placed or disposed of on premises, but it does not include an incident or set of circumstances involving only the emission of any noise.

In the case of a material harm incident (refer to **section 5.1**), prior to any other action, the site must contact 000 if the incident presents an immediate threat to human health or property. Fire and Rescue NSW, the NSW Police and the NSW Ambulance Service are the first responders, as they are responsible for controlling and containing incidents.

If the material harm incident does not pose any threat to human health or property, concurrently with contacting emergency services (000), all possible actions should be taken to control the pollution incident and minimise health, safety and environmental consequences. These actions must be employed to the maximum extent possible to:

- Provide for the safety of people at and within the vicinity of the site, and
- Contain the pollution incident.

In compliance with health and safety management procedures, the actions to be implemented at Slys Quarry in the event of an incident include the following:

1. Secure the scene and contain the incident
2. Gather information (i.e. environmental monitoring)
3. Determine the investigation level
4. Commence an ICAM (if required)
5. Review and classify information and determine actions
6. Complete actions
7. Trend analysis reports

Arrangements, including description and location of safety equipment, for minimising risk of harm to people and the environment as a result of the pollution incident, and for containing or controlling a pollution incident, are detailed in Slys quarry mine safety management plan.

The management plan documents the roles and accountabilities of key personnel at the operation in the event of an emergency and the contact details for appropriate emergency services. The plan also provides designated evacuation points and procedures in the event of an emergency. Any changes to emergency procedures are documented and communicated to all personnel.

Incident management at Slys Quarry focuses on actions to:

- Secure and assign necessary tactical response resources, including equipment and/or personnel, to minimise the environmental impacts associated with an incident;
- Provide that tactical response operations are carried out in a safe, well organised, legal and effective fashion;
- Provide for the safety and welfare of all responders, employees, contractors and visitors;

- Continuously assess the incident to determine the adequacy of tactical response operations and the need for further assistance;
- Manage stakeholders arriving at the site;
- Minimise effects on people, the environment, property, production, and company reputation;
- Implement an environmental monitoring program to quantify impacts as a result of an incident as well as to be used as the basis to notify adjacent landholders and downstream water users as to whether avoidance or remediation measures are required; and
- Interact as appropriate with all Slys quarry and Newman Quarrying Pty Ltd personnel

All Slys Quarry and Newman Quarrying Pty Ltd employees and contractors receive emergency preparedness and response training during their site induction. Slys quarry production manager coordinates any site training or operation drills in emergency management as required. Controls for PPE and incident containment and control equipment are detailed in the risk assessment documents listed in **Section 2.2**, this includes but is not necessarily limited to:

- Emergency spill kits;
- Portable pumping infrastructure;
- Earth moving plant;
- Floating booms; and
- Erosion and sediment control materials.

Slys quarry and Newman Quarrying Pty Ltd has limited authority to undertake pollution management activities on private property, or outside the site boundary and in such cases will liaise directly and provide appropriate assistance to the relevant authority, landowner and emergency services.

5. NOTIFICATION PROCEDURES

5.1 Determination of Material Harm

Following containment of the incident, immediate action must be taken to determine if the incident can be classified as a 'material harm incident', i.e. considered to be causing or threatening material harm. As defined by section 147 of the POEO Act, a material harm incident has occurred if the incident:

- Involves actual or potential harm to the health or safety of human beings or to ecosystems that is not trivial; or

- Results in actual or potential loss (including all reasonable costs and expenses that would be incurred in taking all reasonable and practicable measures to prevent, mitigate or make good harm to the environment) or property damage of an amount, or amounts in aggregate, exceeding \$10,000.00 (or such other amount as is prescribed by the regulations).

The determination of a material harm incident will be made by Slys quarry production manager in conjunction with Newman Quarrying Pty Ltd management.

5.2 Internal and External Notification

As discussed in **Section 3.1**, internal reporting of environmental incidents is the responsibility of all employees and contractors. In the event of a material harm incident, response and notification must be undertaken as per **Table 5.1**, which contains the following important information:

- The local government authority for the area in which the EPL is issued;
- The persons and authorities to be notified by Part 5.7 of the POEO Act; and
- The contact details of each relevant authority referred to in section 148 of the POEO Act.

The agencies listed in **Table 5.1** must be contacted in the order outlined below:

Table 5.1 PIRMP Notification Requirements

Agency	Contact Details
Fire and Rescue	000 (only to be contacted first if fire or rescue are required)
EPA	131 555
Ministry of Health	02-49246477 (ask for public health officer on call)
Work Cover	131 050
Clarence Valley Council	02-66452266

In the instance of identification of an environmental incident or hazard, the personnel will report the issue immediately to the quarry manager who will report it to Newman Quarrying Pty Ltd management. Immediately is taken to mean 'promptly and without delay'. As per guidance provided by the EPA, the decision on whether to notify the incident in accordance with Part 5.7 of the POEO Act should not delay immediate actions to provide for the safety of people or contain the pollution incident, However, incident notification will be made as soon as it is safe to do so.

In addition to being detailed in this document, procedures for undertaking internal and external notification are included in Slys Quarry mine safety management plan. Record keeping of incident details, including investigations and outcomes, will also be undertaken in accordance with Slys quarry mine safety management plan.

After initial notification of any material harm incident, it will be the responsibility of the Company Director – Mark Newman to liaise with any authority listed in **Table 5.1** that requests additional information, or is providing direction for management of the material harm incident. This may include incident investigation reports and ongoing environmental monitoring results.

5.3 Notification to Local Landholders and Community

Community notification shall be undertaken at the determination of the Newman Quarrying Pty Ltd Management and Slys Quarry Production manager. Names and contact details of neighbours and other locals are kept on site at the quarry. The following notification methodology is proposed to be utilised as required:

- Early warnings: same day telephone notification to all landholders whom may be affected by the incident over the next 24 hour period; and

- Updates: follow up phone calls to all landholders whom may have been notified by the initial early warning. Updates are to be provided to the broader local community in affected areas via information sheets or newsletters, community consultative meetings, media statements or any other strategy that may be required.

Priority will be granted to notification of sensitive premises in close proximity if there are any such as schools, pre-schools, nursing homes and hospitals. Information provided to the community will be relevant to the incident and may include the following details:

- Type of incident that has occurred;
- Potential impacts on local landholders and the community;
- Site contact details; and
- Advice or recommendations based on the incident type and scale.

6. TRAINING, TESTING AND COMMUNICATION

6.1 Training

All personnel affected by the content of this document will receive instruction or explanation on the relevant parts of the document.

General information relating to incident management and emergency response shall be included in all site inductions.

A training exercise designed to test the adequacy of emergency preparedness and response will be undertaken at least once a year. Training exercises may involve the emergency response team responding to a simulated emergency, but may also include expanded simulations that involve other (or all) site personnel, Newman Quarrying Pty Ltd management and external response agencies.

All training records, including the name of the person undertaking the training and the date of training, shall be maintained in compliance with Slys quarry mine safety management plan and mining legislation.

6.2 Testing, Review and Maintenance

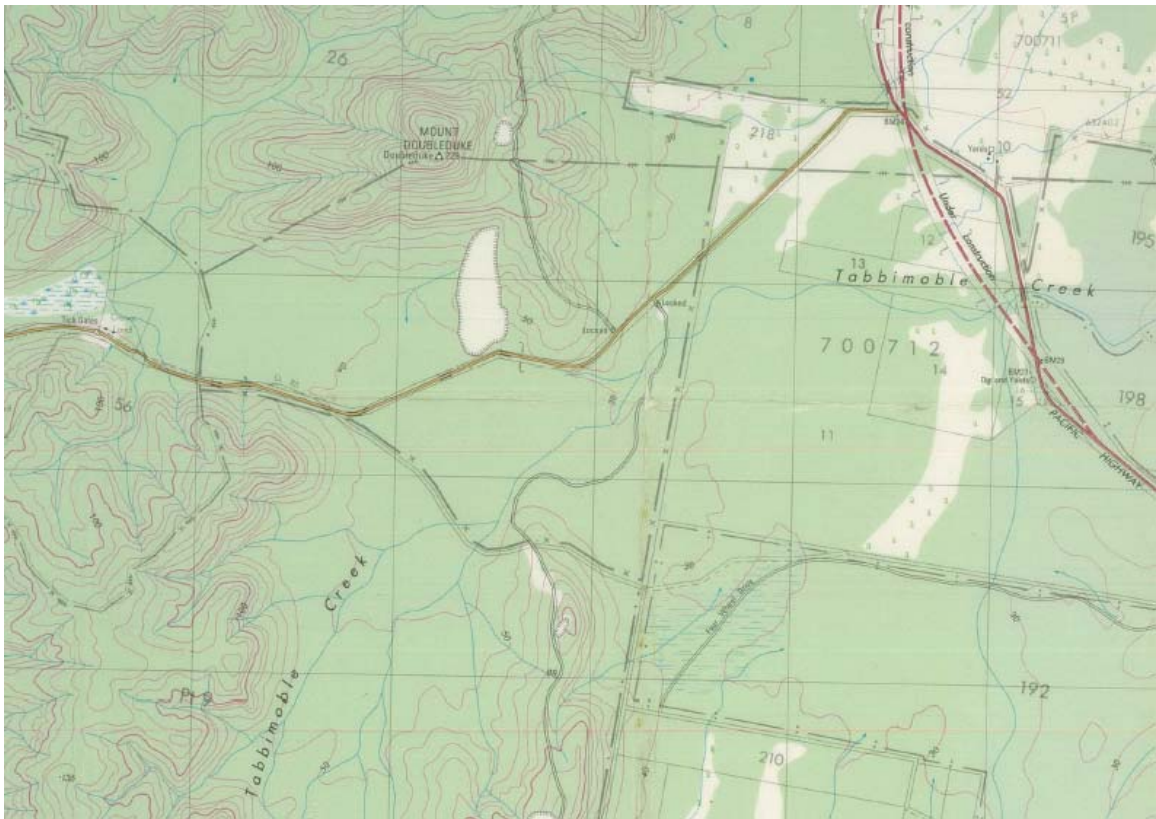
Testing of the PIRMP will be undertaken to check that the information is accurate and current and that the plan is capable of being implemented in a workable and effective manner. Testing shall be undertaken in the following ways:

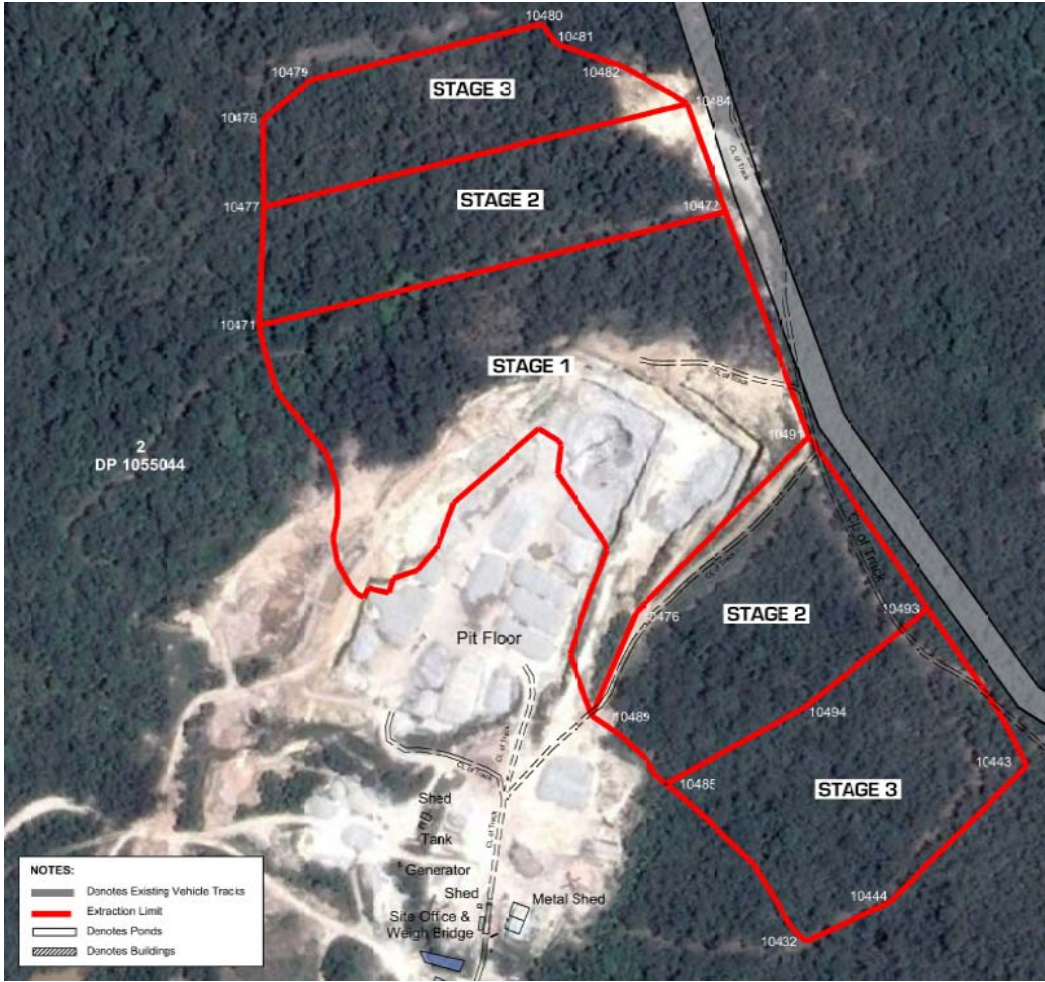
1. The PIRMP will be tested by assessing and reviewing it and making any necessary changes. Testing will include all components of the plan, including training requirements;
2. A review of the PIRMP will occur every 12 months commencing from the date of authorisation of Newman Quarrying Pty Ltd management. Contact details in this document must be kept current at all times; and
3. The PIRMP will be reviewed within 1 month of the date of any pollution incident that occurs in the course of an activity to which the EPL relates. This review will be undertaken in light of the incident, to determine if the information included in the plan is accurate and up to date and the plan is capable of being implemented in a workable and effective manner.

Records will be kept in accordance with Slys quarry mine safety management plan documents. Information to be retained regarding PIRMP testing includes:

8.0 Appendices

8.1 Appendix 1 – Figures





9.0 CONTROL AND REVISION HISTORY

9.1 Document Information

This document is controlled by Newman Quarrying Pty Ltd manager, Mr Mark Newman. It is effective from 1st September 2012 and relates to the EPL for Slys Quarry, Jacky Bulbin Road, Tabbimobile.

9.2 Revisions

Version	Date reviewed	Reviewed by	Amendment nature
1	1 st September 2012	Mark Newman	Original prepared
2	2 nd August 2013	Mark newman	Filing, printing, clearer
3	29 th July 2016	Mark Newman	Spelling, Add to website